



Child, Home  
and  
Community



2009  
Family  
Fun  
Guide



Made possible by:

**Doylestown Hospital  
Dynacell  
Fox Rothschild  
Mid-Atlantic Packaging  
Sanford Alderfer Companies  
Univest**

We are proud to support  
Child, Home and Community's  
programs for young parents.



**Let Our Experience Be Your Guide®**



**Fox Rothschild** LLP  
ATTORNEYS AT LAW

Bucks County Office  
2700 Kelly Road, Suite 300  
Warrington, PA 18976-3624  
215-345-7500

**[www.foxrothschild.com](http://www.foxrothschild.com)**

*A Pennsylvania Limited Liability Partnership*

California Connecticut Delaware Florida Nevada New Jersey New York Pennsylvania



# FROM OUR EXECUTIVE DIRECTOR ...

On behalf of Child, Home & Community, I am happy to present our *2009 Family Fun Guide*. I appreciate the many generous contributions that have made publication of this *Guide* possible.

The purpose of this *Guide* is to share with you some ideas for fun activities that you and your family can enjoy together. We've also included information about CHC, our many programs, and how YOU can help. I hope you enjoy the *Guide*, and hope you enjoy learning more about CHC, too.

CHC helps young parents build a better future for themselves and their children -- through childbirth education to ensure healthy births, and through parenting and prevention education to enhance families' stability and promote self-sufficiency. CHC is a 501(c)(3) nonprofit agency operating in Pennsylvania's Bucks and Montgomery Counties.

If you would like more information about CHC, please visit our web site, or contact me at the phone number below. Thanks for your support!

***Beth Styer***  
Executive Director

**Child, Home & Community**  
**144 Wood Street**  
**Doylestown, PA 18901**  
**215.348.9770**  
[www.CHCinfo.org](http://www.CHCinfo.org)



Care.  
Reinvented.



## Doylestown Hospital

The mission of Doylestown Hospital is to provide a responsive healing environment for our patients and their families, and to improve the quality of life for all members of our community.

595 West State Street  
Doylestown, Pennsylvania 18901  
215-345-2200  
[www.dh.org](http://www.dh.org)



Creating a new generation of leaders.



To join a troop, volunteer or find out about our camps  
call 888.564.4657 or visit [www.gsep.org](http://www.gsep.org)



# Contents

	page
<b>About CHC</b>	<b>6 - 10</b>
<b>Family Fun</b>	<b>11 - 22</b>
• Parks & Nature Centers	
• Farms & Farm Markets	
• Museums & Gardens	
• County Libraries	
• Parks & Recreation Programs	
• Boats, Planes & Trains	
• Historic Sites	
• Other Resources	
• On-Line Education & Parenting Resources	
<b>Community Resource Guide</b>	<b>23</b>
<b>CHC Fundraising</b>	<b>25</b>
<b>CHC Contacts</b>	<b>26</b>



I hope you enjoy our *2009 Family Fun Guide*. If you would like an electronic (PDF) copy of the *Guide* so you can easily link to all the great web sites we've listed, please contact me.

Also, please contact me if you have any suggestions for things to include in our next publication of the *Guide*, would like to be a sponsor for the next *Guide*, or would like to make a donation to Child, Home & Community.

Thank you for your support!

*Maureen Keyte*

Development Director, Child, Home & Community

[Maureen@CHCinfo.org](mailto:Maureen@CHCinfo.org)

**Michael W. Mills, Esq.**  
is proud to support **Child Home & Community** in  
all that it does for young parents.



**ANTHEIL MASLOW & MACMINN, LLP**

ATTORNEYS & COUNSELORS



*You Can't Always Plan  
for Life's Challenges.*



**Huntingdon  
Valley Bank**

Huntingdon Valley Bank Can Help.

Life's priorities can change quickly. At Huntingdon Valley Bank, we know this, and have built a suite of consumer banking products so your banking can be stress-free, allowing you more time to tend to your more important tasks.

Since 1871, Huntingdon Valley Bank has been helping families and businesses build a better, more secure future. Wherever you are on life's journey, Huntingdon Valley Bank has the products, services and experience to make getting there as easy as can be.

Call us today at (215) 947-1300 to learn about the ways in which  
Huntingdon Valley Bank can serve you, or visit us online at  
[www.huntingdonvalleybank.com](http://www.huntingdonvalleybank.com).



Member FDIC



# CHC Programs

Young parents face many challenges: many teen mothers receive no prenatal care; teen mothers are more likely to deliver low birth weight babies; adolescent parents are at a high risk for dropping out of school; and children of adolescent parents are at greater risk of abuse. **Child, Home & Community helps young parents face these challenges and build a better future for themselves and their children through various education and support programs:**

## **FOCUS ON MOTHERHOOD**

Focus on Motherhood is a childbirth class that prepares pregnant teens, fathers-to-be, and families for childbirth. This twelve-week course meets weekly to explore what it takes to get through childbirth and have a healthy baby. CHC's Focus on Motherhood program eases fears and makes childbirth as comfortable as possible. CHC instructors help each family find ways to cope with the challenges of pregnancy, and provide support needed to turn a crisis into a positive new beginning.

## **BUILDING THE FAMILY**

In the Building the Family program, young moms and dads come together monthly to share their experiences and to support each other through the challenges of being young parents. CHC instructors offer guidance on parenting issues, relationships, housing, food, clothing, and career counseling.

## **SCHOOL-BASED PARENTING PROGRAMS**

CHC's school-based programs bring together young parents and CHC instructors -- to help young parents find the resources needed to cope with parenting while staying in school.

## **CHC also offers education programs in the community:**

### **TEEN PARENTHOOD AWARENESS**

Teen Parenthood Awareness is an in-school program designed to provide an "eye-opening" view of pregnancy and parenting. This program, designed and taught by CHC instructors, dispels any romantic illusions of parenthood, and motivates teens to prevent untimely pregnancy.

### **BABYSITTING WORKSHOPS**

CHC's Babysitting Workshops offer essential babysitting education for youth ages 10 to 15. See page 17 of this *Guide* for details.

# How you can help



CHC's programs for young parents and their children wouldn't be possible without the generous support of our community. **There are *many* ways YOU can help CHC:**

## DONATIONS

- Your **donations** are an important source of funding for CHC's programs. Donations can be made via check (mail to: 144 Wood Street, Doylestown PA 18901), or via our web site: [www.CHCinfo.org](http://www.CHCinfo.org)
- You can designate CHC to receive your **United Way contributions** (check the "donor option" and designate "Child, Home & Community").
- If your company has a **matching gifts program**, please inform them of your donation to CHC so it can be matched.
- Your donations of **diapers** (any size) and **baby wipes** are always appreciated. Please call ahead to confirm drop-off times at our Doylestown office.

## FUNDRAISERS

Your generous support of CHC's various fundraisers throughout the year helps fund our many programs. **Please see pages 25 and 27 of this *Guide* for details.**



# How you can help

You can also help CHC by volunteering your time and talents!

## **VOLUNTEER WORK**

- CHC offers many **volunteer opportunities**. A few of the ways you can help are: assisting with babysitting during Parent Support Group meetings; joining our Fundraising Committee; or joining our Board of Directors.
- Another great way to volunteer your time to support CHC is to **organize an activity to benefit CHC** at your work, church, or among your friends. You could:
  - ◇ hold a “baby shower” to collect items for new mothers and babies
  - ◇ collect diapers and wipes
  - ◇ collect books for infants and toddlers
  - ◇ knit infant blankets and sweaters
  - ◇ organize a fundraiser, or serve on one of our fundraiser event planning committees
  - ◇ at work, encourage others to donate to the United Way campaign, designating CHC to receive the donation

**To discuss ways that YOU can help CHC, please contact us at 215.348.9770, or visit us at [www.CHCinfo.org](http://www.CHCinfo.org). We appreciate any assistance or support you can provide!**

Auction Appraisal  
Moving Storage  
Real Estate Senior Transitions

Together we provide solutions.

Sanford Alderfer Companies are structured to help people easily and efficiently sell their valued collections, personal property, real estate, and to help move and store their property with confidence.



[www.SanfordAlderferCompanies.com](http://www.SanfordAlderferCompanies.com)

*"Helping people through transitions in life."*





# Parks & nature Centers



## National Parks in Bucks and Montgomery Counties

Delaware Wild & Scenic River [www.nps.gov/lode](http://www.nps.gov/lode)

Schuylkill River Heritage Area [www.nps.gov/scrj](http://www.nps.gov/scrj)

Valley Forge Historic Park [www.nps.gov/vafo](http://www.nps.gov/vafo)

## State Parks in Bucks and Montgomery Counties

Delaware Canal State Park, Easton to Bristol

Evansburg State Park, near Norristown and Collegeville

Fort Washington State Park, Ft. Washington

Neshaminy State Park, Bensalem

Nockamixon State Park, Quakertown

Norristown Farm Park, Norristown

Ralph Stover State Park, Upper Black Eddy

Tyler State Park, Newtown



For information on all the parks listed above, visit:

[www.dcnr.state.pa.us/stateparks/parks/region\\_philadelphia.aspx](http://www.dcnr.state.pa.us/stateparks/parks/region_philadelphia.aspx)

Other PA State Parks: [www.getoutdoorspa.state.pa.us](http://www.getoutdoorspa.state.pa.us)

## Bucks County Parks and Nature Centers

Visit [www.buckscounty.org/government/departments/parksandrec/index.aspx](http://www.buckscounty.org/government/departments/parksandrec/index.aspx) to find a Bucks County park or nature center near you. Information regarding county pools, boat rentals, cabins, and camping is also provided.

## Montgomery County Parks and Nature Centers

Visit <http://parks.montcopa.org/parks> to find a Montgomery County park, natural area, nature center, historic site, or hiking trail near you.



Many **local parks** in our area are maintained by the various township's Parks and Recreation Departments. Check your local township web site for details on park locations and programs (see page 19 of this *Guide* for more information).



# farms & farm markets



**Active Acre Farms, Newtown**

[www.activeacresfarm.com](http://www.activeacresfarm.com)

**Carousel Lavender Farm, New Hope**

[www.carouselfarmlavender.com](http://www.carouselfarmlavender.com)

**Freddy Hill Farm, Lansdale**

[www.freddyhill.com](http://www.freddyhill.com)

**Hellerick's Farm, Plumsteadville**

[www.hellericksfarm.com](http://www.hellericksfarm.com)



**Hendrick's Dairy Farm, Telford**

[www.hendricksfarmsanddairy.com](http://www.hendricksfarmsanddairy.com)

**Hillside Farms Bison, Telford**

[www.hillsidefarms.biz](http://www.hillsidefarms.biz)

**Kohler Farms, Horsham**

[kohlerfarms.net](http://kohlerfarms.net)

**Manoff Market Gardens, New Hope**

[www.manoffmarketgardens.com](http://www.manoffmarketgardens.com)

**Merrymead Farm, Lansdale**

[www.merrymead.com](http://www.merrymead.com)

**None Such Farm Market, Buckingham**

[www.nonesuchfarms.com](http://www.nonesuchfarms.com)

**Peace Valley Lavender Farm, Doylestown**

[www.peacevalleylavender.com](http://www.peacevalleylavender.com)





# f a r m s & f a r m m a r k e t s



**Shady Brook Farm, Yardley**  
[www.shadybrookfarm.com](http://www.shadybrookfarm.com)

**Solebury Orchards, New Hope**  
[www.soleburyorchards.com](http://www.soleburyorchards.com)

**Styer Orchard, Langhorne**  
[www.styerorchardsmarket.com](http://www.styerorchardsmarket.com)



**Tabora Farm and Orchard, Chalfont**  
[www.taborafarmandorchard.com](http://www.taborafarmandorchard.com)

**Trauger's Farm Market, Kinterville**  
[www.traugers.com](http://www.traugers.com)

## **Weekly farmer's markets are held in:**

Doylestown [www.buckinghampacivic.org](http://www.buckinghampacivic.org)

New Hope [www.newhopeborough.org/farmersmarket.htm](http://www.newhopeborough.org/farmersmarket.htm)

Plumsteadville [www.plumsteadvillegrange.org](http://www.plumsteadvillegrange.org)

Quakertown [www.quakertownfarmersmkt.com](http://www.quakertownfarmersmkt.com)

Wrightstown [www.buckscountyfoodshedalliance.org](http://www.buckscountyfoodshedalliance.org)

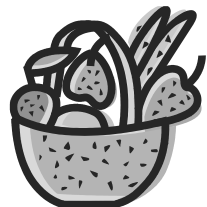
... and in Flourtown, Glenside, Limerick, Perkasio, Pottstown, and many other towns in our area. To find a farmer's market near you, search the sites listed below.

## **Bucks County Farm Markets:**

[bucks.extension.psu.edu/Agriculture/freshfarmlist.html](http://bucks.extension.psu.edu/Agriculture/freshfarmlist.html)

## **Montgomery County Farm Markets:**

[montgomery.extension.psu.edu/Agriculture/farmketlist05.pdf](http://montgomery.extension.psu.edu/Agriculture/farmketlist05.pdf)



**True wealth is  
about more  
than money.  
It's about  
achieving life.®**



**TOTAL MERRILL®**

Let us help you achieve what matters most to you. Contact a Merrill Lynch Financial Advisor today.



**Denise Keil Martin, CFM, CRPC**

Vice President  
Senior Financial Advisor

(215) 340-3334

[http://fa.ml.com/denise\\_martin](http://fa.ml.com/denise_martin)

600 Hyde Park  
Doylestown, PA 18902



Merrill Lynch, Pierce, Fenner & Smith Incorporated is a registered broker-dealer and a wholly owned subsidiary of Bank of America Corporation.  
Investment products.

<small>See Not FDIC Insured</small>	<small>See Not Bank Guaranteed</small>	<small>See Low Risk</small>
-------------------------------------	--	-----------------------------

We don't achieve life and Total Merrill (TM) is a registered service mark of Merrill Lynch & Co., Inc. Total Merrill is a service mark of Merrill Lynch & Co., Inc. © 2009 Merrill Lynch, Pierce, Fenner & Smith Incorporated. All rights reserved. Member SIPC.

# REAL FOOD. REAL KITCHEN. REAL FLAVOR.

ARTISAN BREADS • PRIME STEAKS • FRESH SEAFOOD • ECLECTIC WINE LIST • MARTINI FLIGHTS

If our kitchen resembles a farmer's market, it's probably because we run it the hard way — from scratch, taking delivery on fresh produce each morning and serving honest food, teeming with natural flavors.

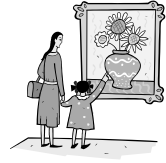
When you want a meal prepared with genuine ingredients and time-honored cooking methods you just can't undertake at home, have a seat in our kitchen.

**H**  
**HOULIHAN'S**

1580 Easton Road | Warrington | 215.343.8150  
750 Upper State Road. | North Wales | 215.393.9100  
[houlihans.com](http://houlihans.com)



# museums & gardens



**Bowman's Hill Wildflower Preserve, New Hope**  
[www.bhwp.org](http://www.bhwp.org)

**Elmwood Park Zoo and Gardens, Norristown**  
[www.elmwoodparkzoo.org](http://www.elmwoodparkzoo.org)



**Hortulus Farm and Gardens, Wrightstown**  
[www.hortulusfarm.com](http://www.hortulusfarm.com)

**Mercer and Fonhill Museums, Doylestown**  
[www.mercermuseum.org](http://www.mercermuseum.org)

**Michener Art Museum, Doylestown and New Hope**  
[www.michenermuseum.org](http://www.michenermuseum.org)

**Moravian Pottery and Tile Works, Doylestown**  
[www.buckscounty.org/government/departments/Tileworks/index.aspx](http://www.buckscounty.org/government/departments/Tileworks/index.aspx)

**Morris Arboretum, Philadelphia**  
[www.business-services.upenn.edu/arboretum](http://www.business-services.upenn.edu/arboretum)

**Tyler Garden, Newtown**  
[www.bucks.edu/tylergardens](http://www.bucks.edu/tylergardens)

**For more information on public gardens in our area:**  
[www.greaterphiladelphiagardens.org](http://www.greaterphiladelphiagardens.org)



# County Libraries



**Bucks:** [www.BucksLib.org](http://www.BucksLib.org)

**Montgomery:** [www.MontCoPA.org/commerce/library.htm](http://www.MontCoPA.org/commerce/library.htm)

**Check out these sites for information about your local library:  
hours, holdings, FREE programs for kids, and MUCH more!**



Cheryl Broad  
RN, RAC

215-300-4289

Center City • Doylestown

Acupuncture • Herbology • Homeopathy • Allergy Elimination

*Child, Home and Community  
thanks the Drug Information Association  
for their generous support of our mission and our programs*



**DRUG INFORMATION ASSOCIATION**

DIA provides the only neutral global forum through our member publications, educational offerings and networking opportunities to facilitate the exchange of information critical to the advancement of the drug discovery and lifecycle management processes.

Learn more about DIA at [www.DIAhome.org](http://www.DIAhome.org)

Office Hours By Appointment

Phone: (215) 340-2797



**JEANNE M. SHARPE, D.C.**  
NEW BRITAIN CHIROPRACTIC

904 Town Center

New Britain, PA 18901

# Did you know?

## Child, Home & Community offers **BABYSITTING WORKSHOPS!**



### Our babysitting workshops are:

- Scheduled throughout the year at area hospitals and schools, but can also be conducted at the location of your choice
- Designed to help youth, ages 10 to 15, become more qualified and responsible babysitters
- Taught by experienced workshop leaders

### Through discussion, videos and activities, we explore the role of the babysitter. Topics we cover include:

- What is expected of a babysitter, and what a babysitter can expect from the family and children
- Setting a fee and building a babysitting business
- Basic infant and child care
- Age appropriate activities
- How to handle emergencies

**If your child would like to become a babysitter, contact us TODAY to schedule a workshop!**



**Child, Home & Community**  
215.348.9770 [www.CHCinfo.org](http://www.CHCinfo.org)



Heart and Soul Portraits

215-356-7408

[www.HSPortraits.com](http://www.HSPortraits.com)

DEANA CORRIGAN  
REALTOR®/Relocation Specialist

Cell: (215) 850-8792  
Fax: (215) 340-6699  
Office: (215) 340-5700 x180  
DeanaCorrigan@gmail.com  
www.DeanaCorrigan.com



**KELLER WILLIAMS**  
REAL ESTATE

2003 S. Easton Road, Suite 108  
Doylestown, PA 18901

Each Office Is Independently Owned and Operated

*"Opening the Door to  
Your Next Move"*

## TwoPedsInAPod

*Pediatric Podcasts for parents on the go  
— An innovative resource for sound  
pediatric advice*

Drs. Naline Lai and Julie Kardos  
[www.twopedsinapod.com](http://www.twopedsinapod.com)



**SHARE THE GOODNESS®**

[WWW.HATFIELDQUALITYMEATS.COM](http://WWW.HATFIELDQUALITYMEATS.COM)

Hatfield Quality Meats Inc. • Hatfield, PA 19440-0902

COME EXPLORE A WHOLE NEW WORLD OF READING FOR CHILDREN AT

**BOOKTENDERS' SECRET GARDEN**  
CHILDREN'S BOOKSTORE & GALLERY



20 B Donaldson St. (b/w E. State & E. Oakland Sts)  
Doylestown, Pa. 18901 215-348-7160  
Ellen Mager, Proprietor

Hours: Mon - Sat 10 - 6 (even. by appt.) Sun 12 - 3

CALL ABOUT OUR AUTHOR ILLUSTRATOR VISITS,  
SPECIAL PROGRAMS & DISCOUNT BOOKCLUBS!

**Celebrating 26 years in Children's Bookselling!**



# Parks & Recreation Programs



**Many townships in our area offer programs for kids and families (concerts, classes, sports clinics, and camps):**

Doylestown [www.doylestownpa.org](http://www.doylestownpa.org)

Middletown [www.middletowntwpbucks.org](http://www.middletowntwpbucks.org)

Montgomery [montgomerytwp.org/departments/parks](http://montgomerytwp.org/departments/parks)

Newtown [www.twp.newtown.pa.us/ntrec](http://www.twp.newtown.pa.us/ntrec)

Norristown [www.norristown.org](http://www.norristown.org)

Pottstown [www.pottstown.org/departments-parks.htm](http://www.pottstown.org/departments-parks.htm)

The township web sites also include information about parks maintained by the Parks & Recreation Departments; many also offer discounted tickets for area attractions and theme parks, so check them out before you travel for a special family day out!

**To find the web site of a township near you:**

<http://sites.state.pa.us/govlocal.html>



# Boats, planes & trains



## **BOAT RENTALS AND WATER SPORTS**

Bucks County River Country [www.rivercountry.net](http://www.rivercountry.net)

Nockamixon Boat Rental [www.nockamixonboatrental.com](http://www.nockamixonboatrental.com)

Schuylkill River Recreation [www.schuylkillriver.org](http://www.schuylkillriver.org)

## **BALLOON RIDES AND SPORT AVIATION**

US Hot Air Balloon Rides - Bucks & Montgomery Counties

[www.ushotairballoon.com/pa\\_flights/index.asp](http://www.ushotairballoon.com/pa_flights/index.asp)

Van Sant Airport, Erwinna

[www.vansantairport.com](http://www.vansantairport.com)



## **HISTORIC TRAIN RIDES**

New Hope & Ivyland Railroad [www.newhoperailroad.com](http://www.newhoperailroad.com)



# Historic Sites



Many of the parks, museums and gardens listed elsewhere in this *Guide* are also historic sites. Some other historic sites in our area:

## **Bucks County Covered Bridges**

[www.buckscountycbs.org](http://www.buckscountycbs.org)

## **Graeme Park, Horsham**

[www.ushistory.org/graeme](http://www.ushistory.org/graeme)

## **Hope Lodge, Fort Washington**

[www.ushistory.org/hope](http://www.ushistory.org/hope)

## **John James Audubon Center at Mill Grove, Audubon**

[www.historicsites.montcopa.org](http://www.historicsites.montcopa.org)



## **Pearl Buck House, Perkasie**

[www.pearl-s-buck.org](http://www.pearl-s-buck.org)

## **Pennsbury Manor, Morrisville**

[www.pennsburymanor.org](http://www.pennsburymanor.org)

## **Pottsgrove Manor, Pottstown**

[www.historicsites.montcopa.org](http://www.historicsites.montcopa.org)

## **Washington Crossing Historic Park**

[www.ushistory.org/washingtoncrossing](http://www.ushistory.org/washingtoncrossing)



# Other Resources

Be a tourist in your own back yard! These web sites can guide you:

## **Bucks County Visitors Guide**

[www.experiencebuckscounty.com](http://www.experiencebuckscounty.com)

## **Philadelphia & the Countryside**

[www.gophila.com](http://www.gophila.com)

## **Valley Forge and Montgomery County Visitors Guide**

[www.valleyforge.org](http://www.valleyforge.org)

## **Visit PA - State Visitors Guide**

[www.visitpa.com](http://www.visitpa.com)



# On-Line education & parenting resources



## Educational Games and Fun for Kids

Elementary Education [www.enchantedlearning.com](http://www.enchantedlearning.com)

Math and Reading Games [www.funbrain.com](http://www.funbrain.com)

The Learning Site [www.harcourtschool.com/index.html](http://www.harcourtschool.com/index.html)

Learning Planet [www.learningplanet.com](http://www.learningplanet.com)

Educational Games from PBS [pbskids.org](http://pbskids.org)

Cool Things about Math [www.planemath.com](http://www.planemath.com)

Educational Games [www.primarygames.com](http://www.primarygames.com)

Reading Fun [www.starfall.com](http://www.starfall.com)

## Movies and Books

Movie Reviews and Descriptions [parentreviews.com](http://parentreviews.com)

Book Reviews/Suggestions [childrensbooksforparents.com](http://childrensbooksforparents.com)

Reading Lists/Tips [www.teachersfirst.com/read-sel.cfm](http://www.teachersfirst.com/read-sel.cfm)

## Kids' Health and Fitness

Presidential Fitness Challenge for Kids

[www.presidentschallenge.org/home\\_kids.aspx](http://www.presidentschallenge.org/home_kids.aspx)

Body & Mind for Kids [www.bam.gov](http://www.bam.gov)



## School Readiness

United Way Success by 6 [www.uwbucks.org/SB6.htm](http://www.uwbucks.org/SB6.htm)

PA Head Start [www.paheadstart.org](http://www.paheadstart.org)

Zero to Three [www.zerotothree.org/site/PageServer](http://www.zerotothree.org/site/PageServer)

## Parenting Support

[www.onetoughjob.org](http://www.onetoughjob.org)

[www.theantidrug.com](http://www.theantidrug.com)

[www.zerotothree.org](http://www.zerotothree.org)

[www.usa.gov/Topics/Parents.shtml](http://www.usa.gov/Topics/Parents.shtml)

[www.papartnerships.org/resources\\_links.asp](http://www.papartnerships.org/resources_links.asp)



[www.momsclub.org](http://www.momsclub.org)

[www.fatherhood.org](http://www.fatherhood.org)

[positiveparenting.com](http://positiveparenting.com)



- *Longer Life*
- *Maintenance – Free*
- *Guaranteed 6-Year Replacement*

**The Most Powerful  
Automotive Battery  
of its Size**

200 Rittenhouse Circle, 8E  
Bristol, PA 19007  
215.788.2236 Fax 215.788.7986  
[www.dynacellbatteries.com](http://www.dynacellbatteries.com)



# community resource Guide



**Parent Action Network** (an information and referral network for parenting education and support programs) 215.727.3687

**Poison Control Center**  
800.222.1222

**Breastfeeding Support**  
**La Leche League**  
800.525.3243  
**Nursing Mothers Advisory**  
215.572.8044  
**Family Breastfeeding Assn.**  
**Hotline:** 215.785.1843

**Locations for CHC's  
*Focus on Motherhood and  
Building the Family*  
programs:**

- \* Abington Hospital
- \* Doylestown Hospital
- \* Grand View Hospital,  
Sellersville
- \* Lower Bucks Hospital, Bristol
- \* N. Penn Visiting Nurse Assn.,  
Lansdale
- \* Pottstown Medical Center
- \* St. Mary's Hospital, Newtown



---

## COMMUNITY ALERT SYSTEM

**ReadyNotifyPA** is a Community Alert System that local officials in Southeastern PA use to send emergency alerts to residents. These alerts can be sent to your cell phone, pager, BlackBerry, PDA and/or E-mail. **ReadyNotifyPA** is provided by the Southeastern PA Regional Task Force and the emergency management coordinators of Bucks, Chester, Delaware, Montgomery and Philadelphia counties. To sign up to receive these alerts, go to [www.ReadyNotifyPA.org](http://www.ReadyNotifyPA.org)



---

## COUNTY WEB SITES

These sites provide information for residents, along with information regarding county courts, county departments, businesses in the county, and planning a visit to the area.

**Bucks County:** [www.BucksCounty.org](http://www.BucksCounty.org)  
**Montgomery County:** [www.MontCoPA.org](http://www.MontCoPA.org)

# *I am Your Baby*



I am your baby, safe inside your womb.  
Do you understand how I am growing?  
Are you ready to help me be born?  
Have you learned about cervical dilatation and pushing?  
Is your camera ready for a picture of me?  
When you attend **childbirth preparation classes at CHC**,  
Ready you will be!

I am your baby, cute as can be.  
Do you know how to feed and change me?  
I love to be swaddled after I am bathed and dressed. Do you know how?  
Have you learned about infant health and nutrition?  
I know we will take a ride in the car. Is my car seat ready for me?  
When you attend **Focus on Motherhood classes at CHC**,  
Ready you will be!

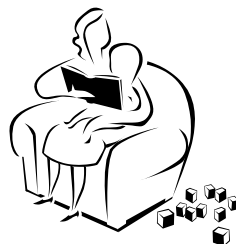
I am your baby growing and learning every day.  
Do you know what is coming next in my development?  
I am on the move in our home. Have you learned to keep me safe?  
Are there some other new moms you can get to know  
and share our story?  
I love it when you read to me. Do you have some bright board  
books for me?  
Come to **Building the Family classes at CHC** and ready you will be!

I am your baby, keeping you busy all the time.  
Are you my Dad? **CHC has support just for dads.**

Do you have a lot of questions about my care? **CHC can send  
out a home visitor.**

Are you looking into the future? **CHC has a Creative Career  
Program to help you find a path.**

**I am your baby.  
CHC will help you get ready for me!**



*Written by Missy Miller, CHC Instructor, 6.6.2009*



# CH C Fundraising

To help fund our many programs to assist young parents, Child, Home & Community sponsors a variety of fundraisers. **Please support us!**

- Use **iGive** for all your Internet shopping and searches. Go to [www.iGive.com](http://www.iGive.com) for details. Select “Child, Home & Community” as the cause you wish to support. Each time you use iGive for web-based shopping or searching, CHC earns money!
- Register your **Genuardi’s Club Card** at [www.eScrip.com](http://www.eScrip.com) When you designate CHC as the recipient, CHC will receive 3% of your purchases. If you’d prefer, just send your name and Genuardi’s Club Card number to [Maureen@CHCinfo.org](mailto:Maureen@CHCinfo.org), and CHC can register for you.
- Visit the **ORECK Vacuum Store** at 414 N. Main St. in Doylestown on the 1<sup>st</sup> and 3<sup>rd</sup> Thursday of each month from 10-11 am and 7-8 pm. CHC will receive 15% of the sales during this time! [www.oreckstore.com/doylestown](http://www.oreckstore.com/doylestown)
- Come to our **annual fundraiser events!** See page 27 of this *Guide* for details.
- Many local stores (e.g., BonTon) and restaurants (e.g., Chambers 19, Friendly’s) sponsor fundraisers to benefit CHC. Please check our web site for details, and come out to support us whenever you can.

To register for **e-mail updates** regarding CHC fundraisers and events, please send an e-mail to: [Maureen@CHCinfo.org](mailto:Maureen@CHCinfo.org)

**THANK YOU FOR YOUR SUPPORT!**



A member agency of Bucks County  
and North Penn United Ways

**Child, Home & Community**  
144 Wood Street, Doylestown PA  
215.348.9770 [www.CHCinfo.org](http://www.CHCinfo.org)

## Child, Home & Community



helps young  
parents build a  
better future for  
themselves and  
their children.

## BOARD of DIRECTORS

Pam Getman, *President*  
Theresa Schwartz, *VP - Board  
Development*  
Kim Cizerle, *VP - Fundraising*  
Linda Arkens, *Secretary*  
Maxine Romano, *Treasurer*

Brian Doyle  
Stephanie Fineman  
Kimberly Freimuth  
Larry Nolt  
Lisa Moravec-Senior  
Ginny Ward

**Child, Home & Community**  
**144 Wood Street**  
**Doylestown, PA 18901**

**Phone: 215.348.9770**  
**Toll-free: 888.215.9770**  
**Fax: 215.348.2138**

For more information about  
our programs, or to make an  
online donation, visit  
[www.CHCinfo.org](http://www.CHCinfo.org)



A member agency of Bucks County  
and North Penn United Ways

## ADMINISTRATION

Beth Styer  
*Executive Director*

Kathy Thyberg  
*Program Director*

Maureen Keyte  
*Development Director*

Nekesha Wilkerson  
*Senior Case Manager*

Diane Jones  
*Education Case Manager*

Randi McCreesh  
*Employment Specialist*

Bob Malehorn  
*Fatherhood Case Manager*

Becky Van Dine  
*Office Administrator*

## INSTRUCTORS

Mary Jane Atkinson  
Sydney Boone  
Liz Choldeka  
Mary Cissne  
Vivian Corlew  
LaRue Emmell  
Edna Fall  
Tracy Franey  
Laura Friedland  
Ann Gillette  
Jan Iacovelli  
Donna Lipsi  
Jane McCarthy  
Karen Meade  
Meredith Klein  
Missy Miller  
Lisa Rowe  
Jill Schlacter  
Dottie Schell  
Genie Smedburg  
Andrea Snyder  
Linda Thomas  
Linda Woodson  
Karen Zehr



# Happy 30<sup>th</sup> Anniversary!

Child, Home & Community was started in 1980 by friends who wanted to make a difference in the lives of babies in their community. Kathy Thyberg and Doris Price started CHC to help build a better future for children by empowering young parents through education.

For 30 years, CHC's goal has been to ensure healthy births, enhance family stability and promote self-sufficiency. Our core values are:



- All Children have a right to a healthy start in life
- Every expectant teen parent is entitled to quality healthcare and education
- Young parents need support in order to develop healthy children
- All families are valued

celebrate  
with us!

Sunday March 7, 2010



After serving our community for 30 years, CHC is still going strong thanks to YOUR support!

Please mark your calendars for **Sunday March 7, 2010** from **11:30 am to 2:30 pm** — when we'll host our 30-Year Anniversary Celebration event! Planning is underway now for a wonderful event.

*We hope you'll join us for the celebration!*



## Financial Solutions for the Entire Family



Univest has been dedicated to serving our communities for over 130 years, and our commitment to the community is as strong as ever. We also offer comprehensive products and services for every stage of life.



Banking | Insurance | Investments |  
Mortgage Banking | Trust Services | Wealth Management

Equal Housing Lender

Member FDIC